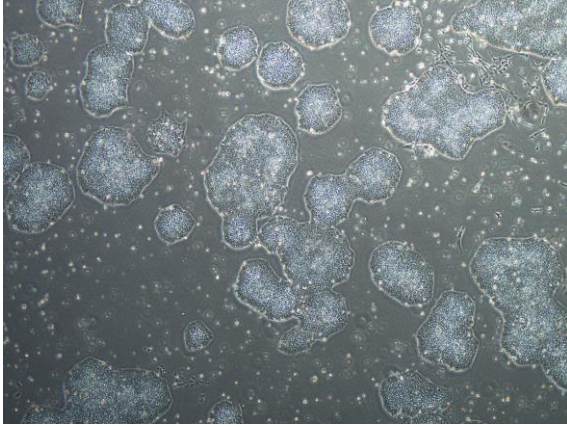
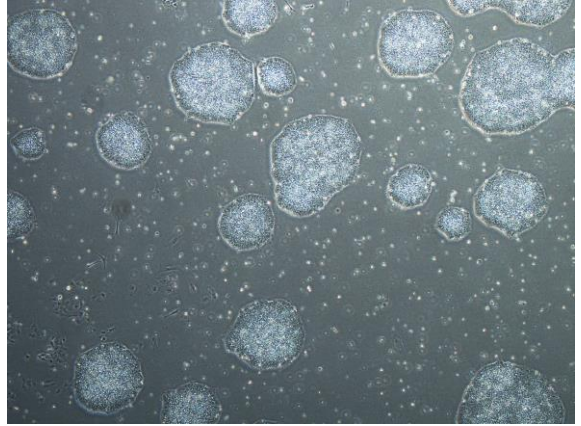


【 CiRA-j-1228 】 Morphology of iPSC colonies

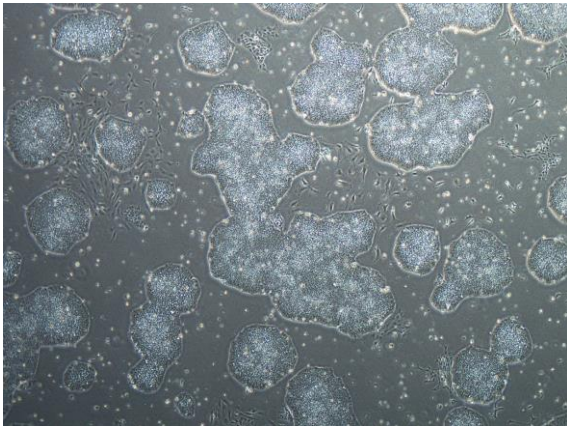
CiRA-j-1228-A: passage-3



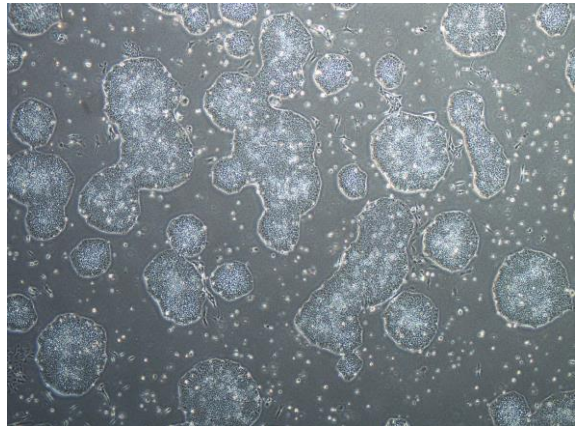
CiRA-j-1228-B: passage-3



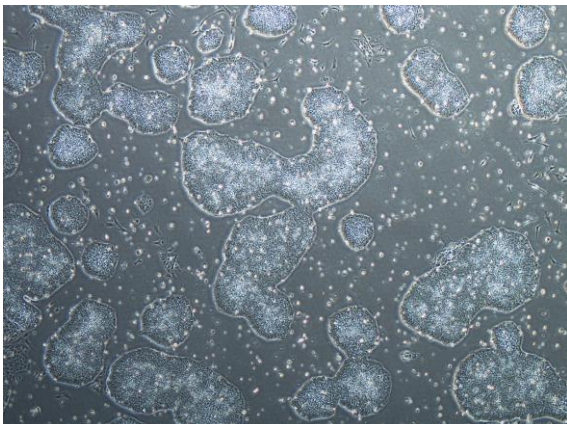
CiRA-j-1228-C: passage-3



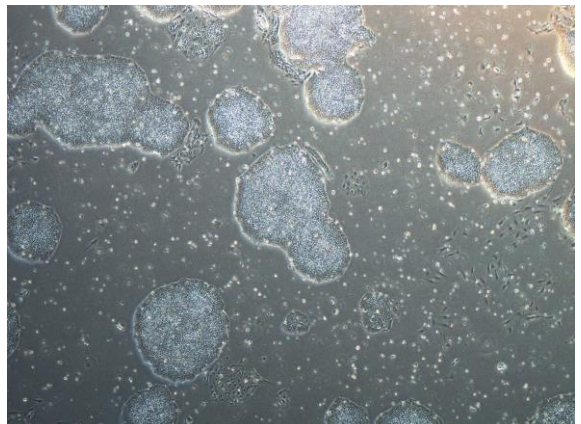
CiRA-j-1228-D: passage-3



CiRA-j-1228-E: passage-3



CiRA-j-1228-F: passage-3



(All images were captured at 4x magnification)